

Cost-effective data security for branch office Ethernet links up to 10 Mbps



Overview

Universal connectivity is the standard for today's enterprise. Connectivity between corporate and branch offices, server farms, data centers, and disaster recovery sites is a must. At the same time, increased regulation and threats against sensitive data are driving organizations to encrypt information as it traverses these networks. Faced with increasing costs, organizations are looking for scalable data protection solutions that allow them to optimize cost efficiency. Designed specifically for sites with low-bandwidth requirements, the Branch Office encryptor extends the SafeNet family of Ethernet Encryption devices to provide a complete solution for network data encryption from 10Mbps to 10Gbps.

Unsurpassed Security of Network Data Transmission

The SafeNet Ethernet Encryptor Branch Office (SEE Branch Office) is a flexible, new encryption platform designed as a small desktop form factor to provide an integrated data security solution for point to point or meshed Ethernet links up to 10 Mbps. SEE Branch Office has been engineered to integrate transparently and simply into network architectures.

The SEE Branch Office provides users with flexible price and performance functionality, optional customized algorithms and scalability in a small footprint. It is a cost-effective solution to connect 100's or even 1000's of remote sites back to the corporate headquarters or data center over low-speed Ethernet links. Organizations use the SEE Branch Office to protect sensitive financial and personally identifiable information as well as confidential business data.

SafeNet Ethernet Encryptors are a family of high-performance Layer-2 security appliances that protect from 10Mbps to 10Gbps Ethernet networks with seamless end-to-end integration. SafeNet Ethernet Encryptors deliver instant protection across the network at Layer-2. Unlike Layer-3 encryption technologies, Layer-2 adds no overhead and virtually no latency.

Addressing Security Standards

The SEE Branch Office has been designed to be FIPS 140-2 compliant. Using AES-256 keys, the industry standard for strong encryption, all Layer-2 payload data including IP addresses and higher level protocols are protected. Digital certificates are employed for remote device authentication and secure key exchange.

Central Policy Management Lowers Cost and Increases Security

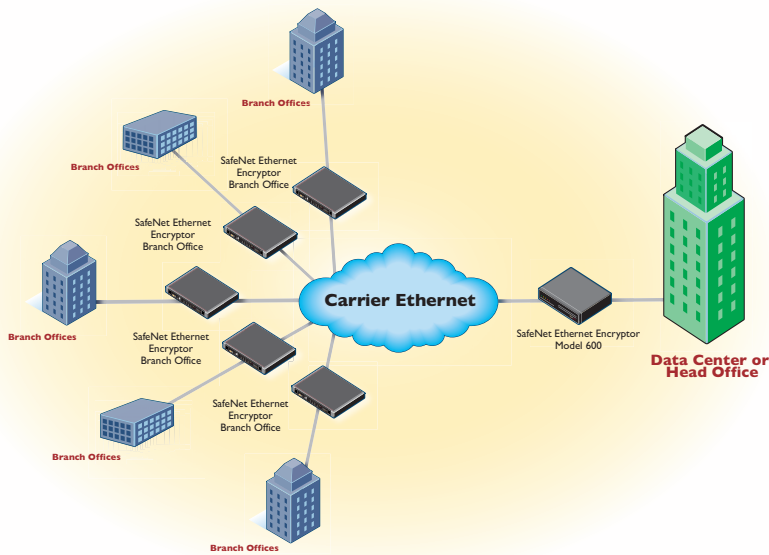
Like all SafeNet high-speed security appliances, the SEE Branch Office is managed by the SafeNet Security Management Center (SMC), a robust Web-based policy management application that is easy to use, secure, and provides the advanced audit and monitoring capabilities necessary for security compliance. SMC provides the ability to define integrated security policies that can be distributed across multiple devices, reducing management complexity and cost.

Benefits

Provides greater bandwidth efficiency

Easy to install into existing network environments

Central configuration, monitoring, and management through SafeNet Security Management Center (SMC)



Technical Specifications

Interoperability

- SEE 100Mbps (Release 1)
- SEE 1Gbps (Release 1)
- SEE 10Gbps (Release 2)

Management

- SNMPv3
- Ethernet 10/100 Base-T RJ45
- RS-232 Local console (DB9 style connector)

LED Status Indicator

- Front Panel: Power, Traffic Security status, Management Port status, Local Ethernet Port status, Network Ethernet Port status, Alarm, Temperature Alarm, and Battery OK/Low
- Back Panel: Ethernet Link and Activity built in to RJ45 connectors

Physical Security

- Tamper proof storage of encryption keys and user passwords
- Tamper resistant case

Environmental

- 0 to 40C operating temperature
- 0 to 80% RH @ 40 C operating humidity
- 95% RH @ 40 C non-operating humidity

Electrical

- An external AC to DC power supply is provided
 - AC: 100-240V, 50/60Hz
 - DC: 15V DC external supply, 18W maximum, 2.1mm center pin positive

Mechanical

- Width: 185mm
- Depth: 160mm
- Height: 40mm
- Weight: 630g

Performance

- Full-duplex operation at data rates up to 10 Mbps
- Key change without interruption

Network

- Ethernet 802.3
- VLAN 802.1Q
- Q-in-Q VLAN 802.1ad
- Support 64 to 1532-byte frame sizes

Interfaces

- 10/100 Base-T RJ45

Connections

- Supports up to 512 meshed connections
- Unique key pair per connection

Access Control

- Role based

Cryptography

- AES algorithm - 256-bit key
- Self synchronizing CFB mode
- Support for customized algorithms

Reporting

- Audit and event logs
- Alarms
- SNMP traps

Key Management

- ATM Forum Security Specification V1.1
- RSA 2048-bit public key
- Master/session key
- Authentication using digital certificates

Accreditations

- RoHS
- FCC Class B
- External Power Supply is certified to FCC Class B, UL/cUL, IEC-60950, CE mark



www.safenet-inc.com

Corporate Headquarters:

4690 Millennium Drive, Belcamp, Maryland 21017 USA
Tel.: +1 410 931 7500 or 800 533 3958, Fax: +1 410 931 7524,
Email: info@safenet-inc.com

EMEA Headquarters:

Tel.: +44 (0) 1276 608 000, Email: info.emea@safenet-inc.com

APAC Headquarters:

Tel: +852 3157 7111, Email: info.apac@safenet-inc.com

For all office locations and contact information, please visit www.safenet-inc.com/company/contact.asp

©2009 SafeNet, Inc. All rights reserved. SafeNet and SafeNet logo are registered trademarks of SafeNet. All other product names are trademarks of their respective owners. PB-EthernetEncrytorBranchOffices-08.26.09